



[HOME](#) [PRODUCTS](#) [DOWNLOADS](#) [CUSTOMERS](#) [RESELLERS](#) [PURCHASE](#)

[REGISTER](#) [SUPPORT](#) [NEWS](#) [CONTACT](#)

## Océ Repro Desk® 1.6 Configuration Instructions for

### AcroPlot Repro PDF & DWF® to TIFF Converter

Although AcroPlot Repro can configure Océ Repro Desk® software through the [AcroPlot Repro Setup](#) dialog, you may manually configure it yourself. Océ Repro Desk software does allow AcroPlot Repro to be defined as the processing engine for both PDF and DWF file types. AcroPlot Repro can not process PLT files inside the Océ Repro Desk software application.

1. Océ uses the standard install of Ghostscript®. So you need to determine where the gswin32.exe file is located. In Océ Repro Desk go to Configure-->Default

## Quick Links

[General Info](#)

[Frequently Asked Questions](#)

[Configuration & Support](#)

[Purchase](#)

## Configuration & Support

[Installation and Registration](#)

[Océ Repro Desk 1.6 File Processing](#)

[Océ Repro Desk 2.0 File Processing](#)

[Océ Publisher 1.6 File Processing](#)

[Océ Publisher 2.0 File Processing](#)

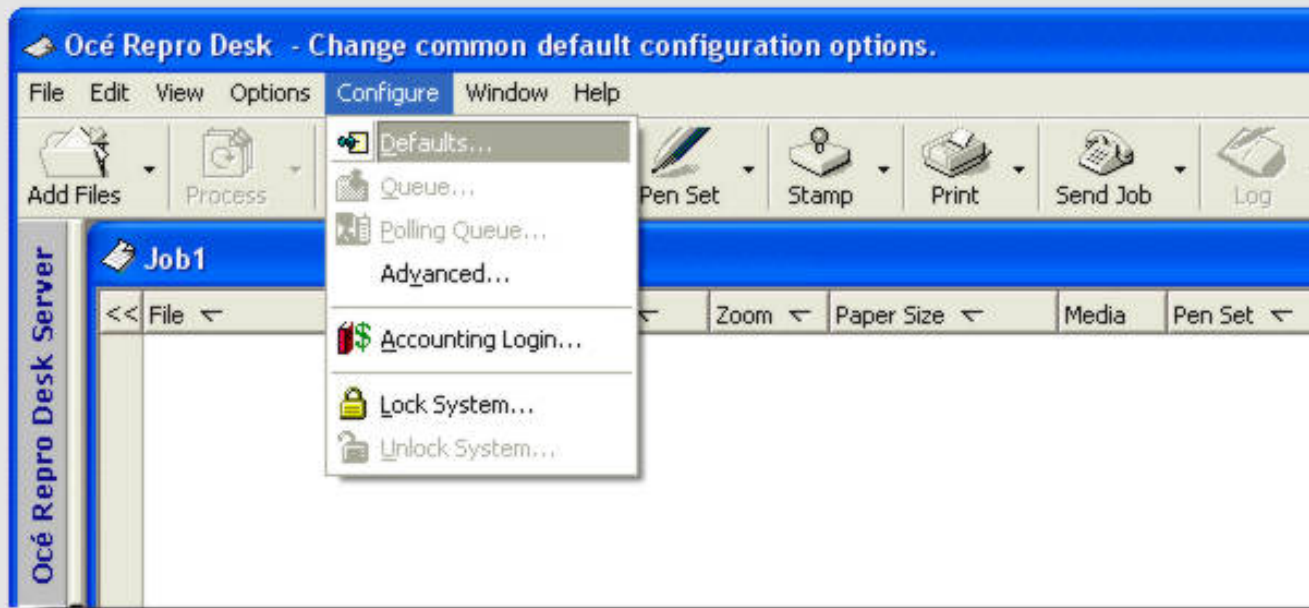
[MetaPrint File Processing](#)

[KIP Request File Processing](#)

[Xerox AccXES File Processing](#)

[Creating Half-size Sets](#)

[Known Limitations](#)



2. Next select the "Postscript Tab" and find the "Ghostscript Postscript Executable" path.

## CADzation Labs Test Files

Our programming team has made available their internal testing and benchmark files.

Download and use them for test conversions, plotting or to really see how powerful and accurate CADzation software is.



[24x36 1-Page PDF Test File](#)



[24x36 5-Page PDF Test File](#)



[24x36 1-Page DWF Test File](#)



[24x36 5-Page DWF Test File](#)

## View This Page As . . .

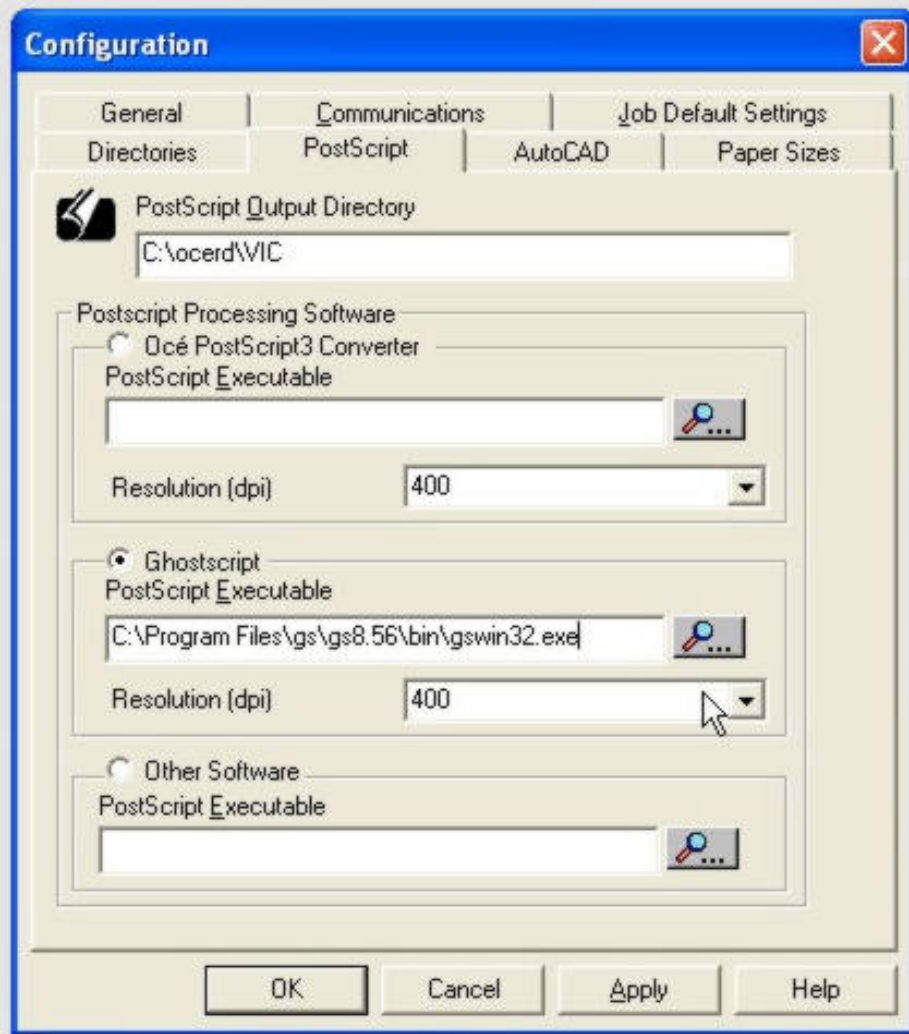
As a courtesy, we have provided this web page in additional file formats.



[AcroPlot Repro Web Page](#)



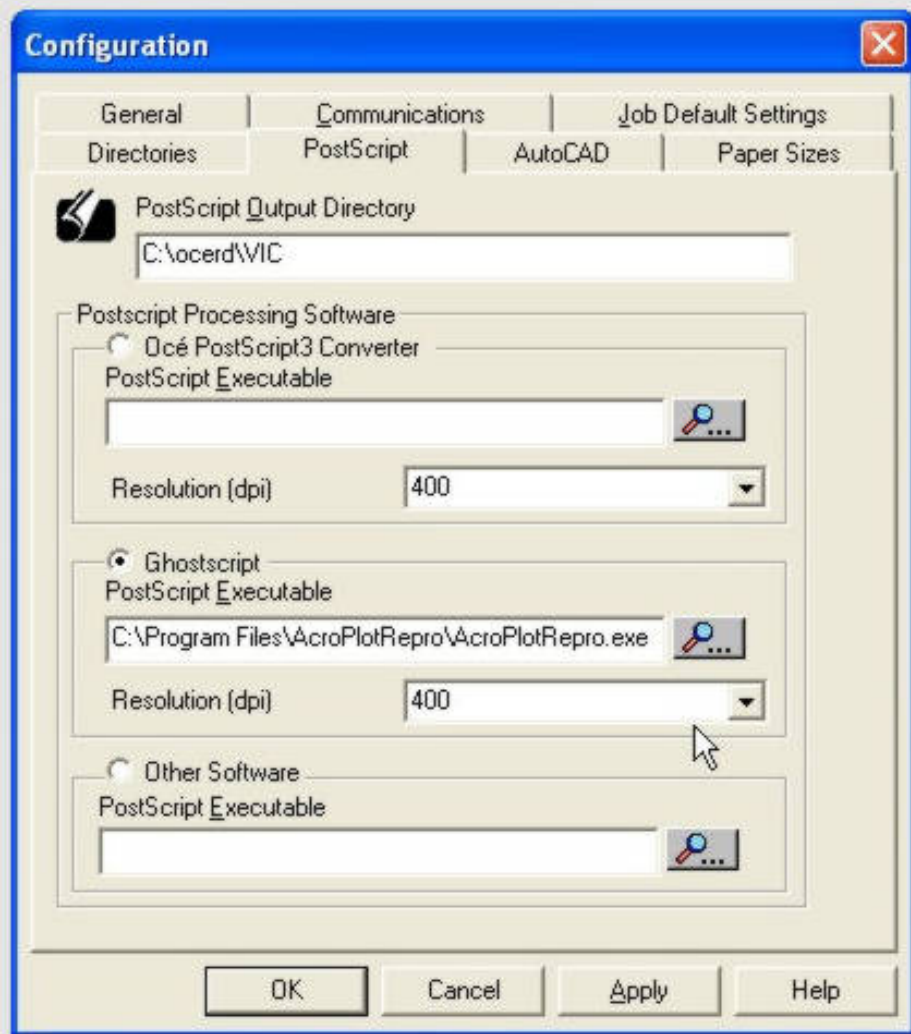
[AcroPlot Repro Web Page](#)



3. To use AcroPlot Repro as the PDF file processor in Océ Repro Desk, change the path to AcroPlotRepro.exe where the Ghostscript Postscript Executable Path normally goes.

**DO NOT TRY TO PUT THE PATH TO THE ACROPLOTRERO.EXE IN THE "OTHER SOFTWARE" OR IN THE "OCÉ POSTSCRIPT3 CONVERTER." ACROPLOT REPRO IS DESIGNED TO WORK AS AN EXACT GHOSTSCRIPT REPLACEMENT AND HENCE NEEDS TO GO THERE.**

The path to AcroPlot Repro is typically: C:\Program Files\AcroPlotRepro\AcroPlotRepro.exe

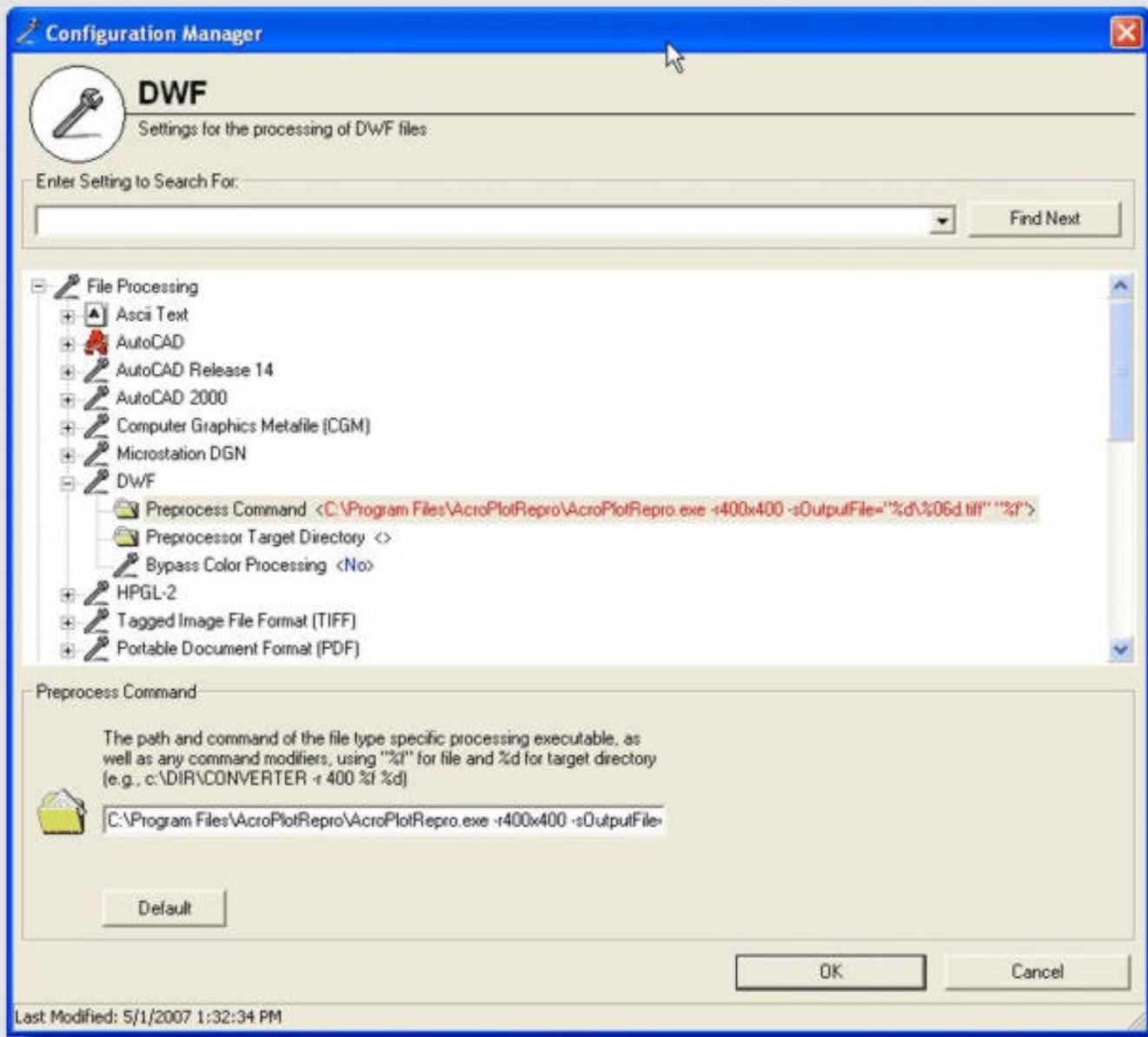


4. Select the "OK" button to save the settings.
5. To configure AcroPlot Repro as the DWF processor in Océ Repro Desk, choose the Configure-->Advanced menu.



6. The under the Files Processing-->DWF set the "Preprocess Command" with a command string for AcroPlot Repro. The string to use (you may have to change the path) is:

C:\Program Files\AcroPlotRepro\AcroPlotRepro.exe -r400x400 -sOutputFile="%d%\06d.tiff" "%f"



If you would like to perform the DWF conversion at a different resolution you can change the -r400x400 to:

- r150x150
- r200x200
- r300x300
- r400x400
- r600x600

[Home](#) | [Products](#) | [Downloads](#) | [Customers](#) | [Resellers](#) | [Purchase](#) | [Support](#) | [News](#) | [About](#)



[Legal and Trademarks](#) | [Privacy Policy](#)

Copyright (c) 2001-2005 by  
CADzation. All rights reserved.