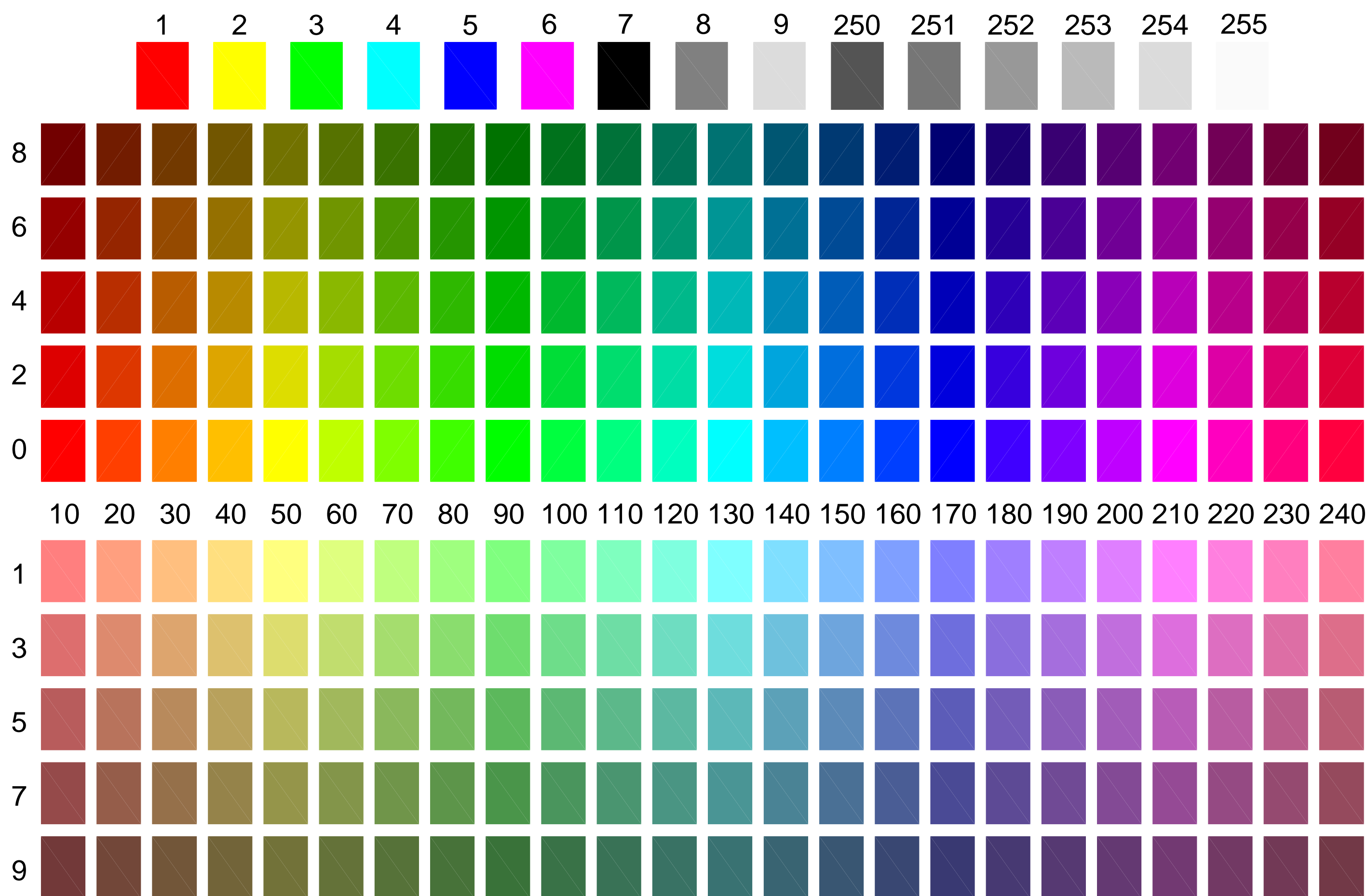
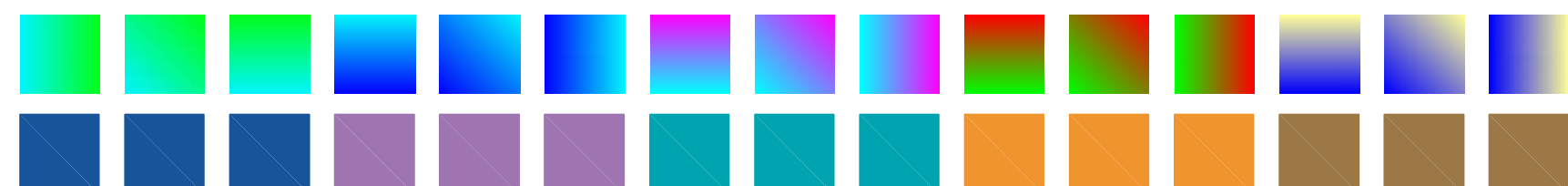


AutoCAD Colors (255)

Each color on separate layer. (i.e. color 205 is on layer 205 and assigned to pen 205)



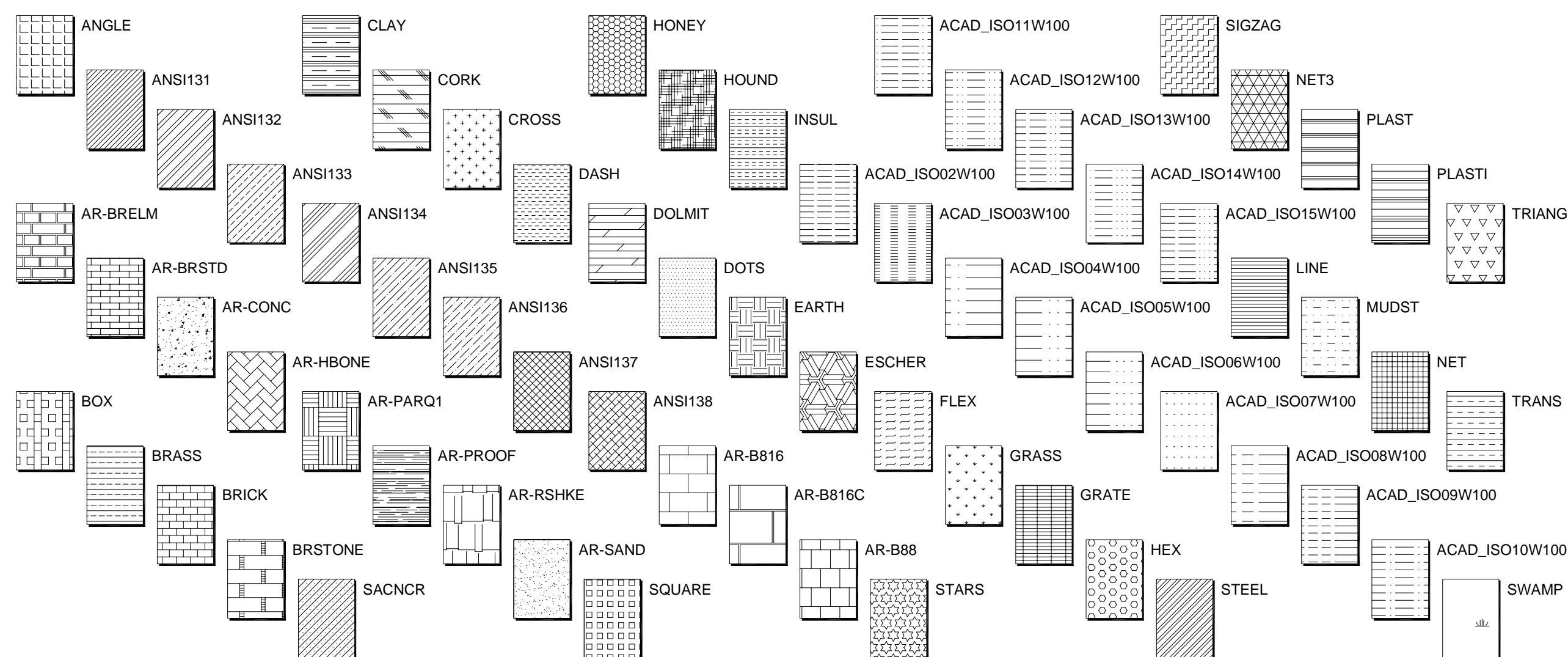
Gradient Fills



Sample True Colors

Note: True color and gradient fills are supported in AutoCAD 2004 and later. These objects may not display properly in earlier versions.

AutoCAD Hatch Patterns



AutoCAD TrueType Fonts

Swiss 721 (helvetica-like)

Regular

Swiss Light -----_abcdefghijklmnopqrstuvwxyz123456789!@#%&'()*

Swiss Light Italic -----_abcdefghijklmnopqrstuvwxyz123456789!@#%&'()*

Swiss Regular -----_abcdefghijklmnopqrstuvwxyz123456789!@#%&'()*

Swiss Italic -----_abcdefghijklmnopqrstuvwxyz123456789!@#%&'()*

Swiss Bold -----_abcdefghijklmnopqrstuvwxyz123456789!@#%&'()*

Swiss Bold Italic -----_abcdefghijklmnopqrstuvwxyz123456789!@#%&'()*

Swiss Black -----_abcdefghijklmnopqrstuvwxyz123456789!@#%&'()*

Swiss Black Italic -----_abcdefghijklmnopqrstuvwxyz123456789!@#%&'()*

Condensed

Swiss Condensed Light -----_abcdefghijklmnopqrstuvwxyz123456789!@#%&'()*

Swiss Condensed Light Italic -----_abcdefghijklmnopqrstuvwxyz123456789!@#%&'()*

Swiss Condensed -----_abcdefghijklmnopqrstuvwxyz123456789!@#%&'()*

Swiss Condensed Italic -----_abcdefghijklmnopqrstuvwxyz123456789!@#%&'()*

Swiss Condensed Bold -----_abcdefghijklmnopqrstuvwxyz123456789!@#%&'()*

Swiss Condensed Bold Italic -----_abcdefghijklmnopqrstuvwxyz123456789!@#%&'()*

Swiss Condensed Black -----_abcdefghijklmnopqrstuvwxyz123456789!@#%&'()*

Swiss Condensed Black Italic -----_abcdefghijklmnopqrstuvwxyz123456789!@#%&'()*

Expanded

Swiss Expanded Light -----_abcdefghijklmnopqrstuvwxyz123456789!@#%&'()*

Swiss Expanded -----_abcdefghijklmnopqrstuvwxyz123456789!@#%&'()*

Swiss Expanded Bold -----_abcdefghijklmnopqrstuvwxyz123456789!@#%&'()*

Swiss Expanded Black -----_abcdefghijklmnopqrstuvwxyz123456789!@#%&'()*

Outline

Swiss Outline Bold -----_abcdefghijklmnopqrstuvwxyz123456789!@#%&'()*

Swiss Outline Black -----_abcdefghijklmnopqrstuvwxyz123456789!@#%&'()*

Swiss Outline Bold Condensed -----_abcdefghijklmnopqrstuvwxyz123456789!@#%&'()*

Monospace 821 (san serif monospace, helvetica-like)

Monospaced -----_abcdefghijklmnopqrstuvwxyz123456789!@#%&'()*

Monospace Italic -----_abcdefghijklmnopqrstuvwxyz123456789!@#%&'()*

Monospace Bold -----_abcdefghijklmnopqrstuvwxyz123456789!@#%&'()*

Monospace Bold Italic -----_abcdefghijklmnopqrstuvwxyz123456789!@#%&'()*

Dutch 801 (serif, times roman-like)

Regular

Dutch Regular -----_abcdefghijklmnopqrstuvwxyz123456789!@#%&'()*

Dutch Italic -----_abcdefghijklmnopqrstuvwxyz123456789!@#%&'()*

Dutch Bold -----_abcdefghijklmnopqrstuvwxyz123456789!@#%&'()*

Dutch Bold Italic -----_abcdefghijklmnopqrstuvwxyz123456789!@#%&'()*

Expanded

Dutch Expanded Bold -----_abcdefghijklmnopqrstuvwxyz123456789!@#%&'()*

Architect's Hand Lettered

Stylus Regular -----_abcdefghijklmnopqrstuvwxyz123456789!@#%&'()*

Bank Gothic (all caps)

Bank Gothic Light -----_ABCDEFGHIJKLMNOPQRSTUVWXYZ123456789!@#%&'()*

Bank Gothic Medium -----_ABCDEFGHIJKLMNOPQRSTUVWXYZ123456789!@#%&'()*

Commercial Script (script)

Commercial Script -----_abcdefghijklmnopqrstuvwxyz123456789!@#%&'()*

Vineta (shadow)

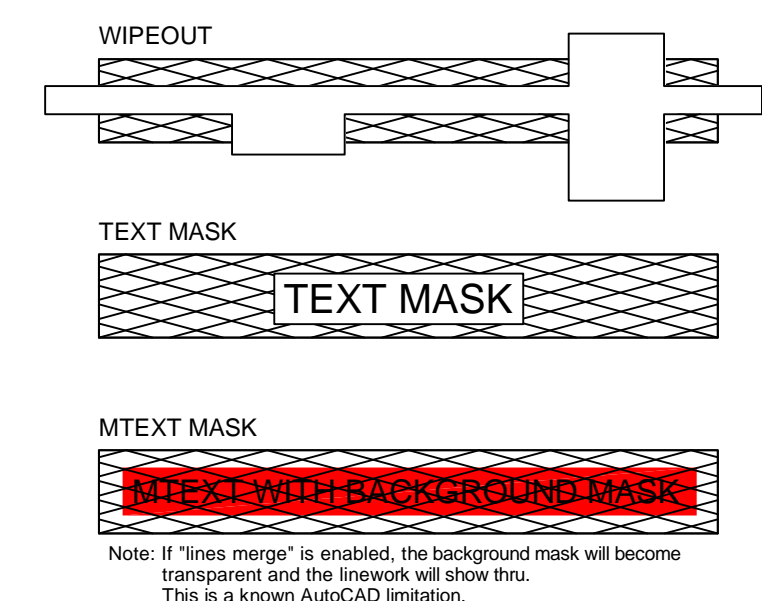
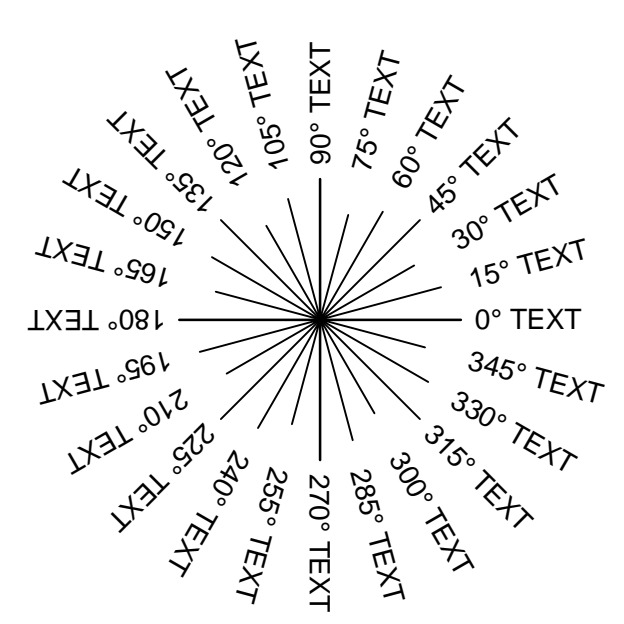
Vineta -----_abcdefghijklmnopqrstuvwxyz123456789!@#%&'()*

Commercial Pi (symbol)

Commercial Pi -----_abcdefghijklmnopqrstuvwxyz123456789!@#%&'()*

Universal Math (math)

Universal Math -----_abcdefghijklmnopqrstuvwxyz123456789!@#%&'()*



AutoCAD Linetypes

CONTINUOUS	BORDER
DIVIDE	BORDER2
CABLIN	BORDERX2
HDR	CENTER
BEAM	CENTER2
TINYDASH	DASHED
THREEDOT	DASHED2
TDOTDASH	DASHEDX2
SOFFIT	DIVIDE2
SOLID	DIVDEX2
DEFAULT	DOT
ACAD_ISO02W100	DOT2
ACAD_ISO03W100	DOTX2
ACAD_ISO04W100	FENCELINE1
ACAD_ISO05W100	FENCELINE2
ACAD_ISO06W100	GAS
ACAD_ISO07W100	GAS_LINE
ACAD_ISO08W100	HIDDEN
ACAD_ISO09W100	HIDDEN2
ACAD_ISO10W100	HIDDENX2
ACAD_ISO12W100	PHANTOM
ACAD_ISO13W100	PHANTOM2
ACAD_ISO14W100	PHANTOMX2
ACAD_ISO15W100	TRACKS
BATTING	

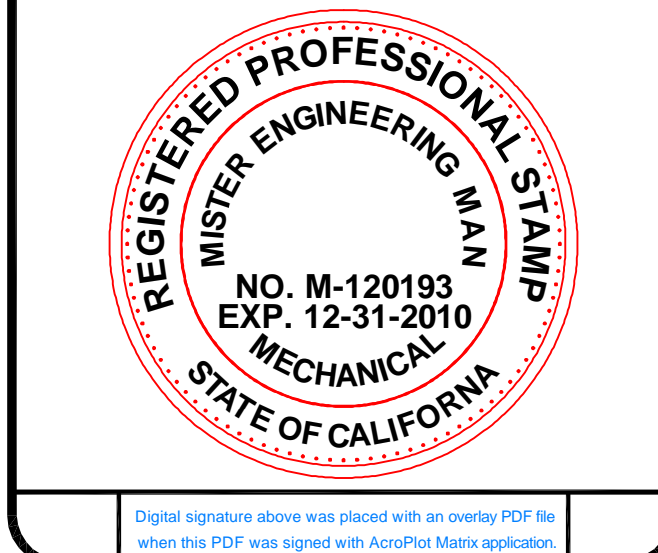


Lines Merge

(If lines merge is enabled, then entities that overlap will be transparent when printed, regardless of draw order.)

Standard Lineweights

mm	inch
Default	
0.05	.002
0.09	.003
0.13	.005
0.15	.006
0.18	.007
0.20	.008
0.25	.010
0.30	.012
0.35	.014
0.40	.016
0.50	.020
0.53	.021
0.60	.024
0.70	.028
0.80	.031
0.90	.035
1.00	.039
1.06	.042
1.20	.047
1.40	.056
1.58	.062
2.00	.078
2.11	.083



Firm Name and Address

CADzation
518 South State Route 31
McHenry, IL 60050
<http://www.cadzation.com>

Document Set

CADzation Sample

Drawing Type
Paper Space Comp.

Drawing By:
Will Munson

Project
PDF & DWF

Date
03-23-2006

Scale
As Printed

Sheet
A.0

